

# SWE 100E

Full-functional Medium and Small-sized Excavator —  
An All-rounder for Urban Construction



## SUNWARD INTELLIGENT EQUIPMENT CO.,LTD.

Add: Sunward Industrial Park, No. 1335 Liangtang Road (E), Xingsha, Changsha, Hunan,  
China Tel: +86 731 8640 7779 E-mail: [international@sunward.cc](mailto:international@sunward.cc)  
Web: [www.sunward.com.cn](http://www.sunward.com.cn)

## SUNWARD EUROPE HEAVY INDUSTRY N.V

Add:Nijvenheidsark 3,3580  
Beringen,Belgium  
Tel:(0032-011)434666  
E\_mail:[eu@sunward.cc](mailto:eu@sunward.cc)

Please read the manual book and maintenance book before operation, changes are periodically added to the information, and Sunward may change the products or services described in this book at any time without announcement. All rights of this manual book reserve to Sunward. SUNWARD Internal Use Only

SWE 2020-06

**Engine power: 60.7kW**  
**Machine weight: 9500kg**  
**Bucket capacity: 0.4m<sup>3</sup>**

# Elegant Appearance of Medium Excavator Framework

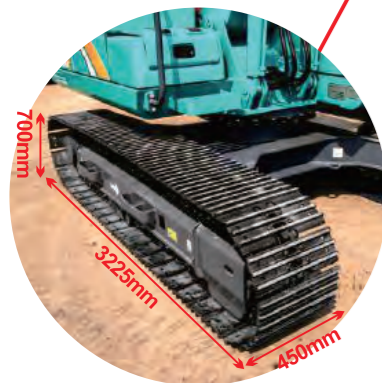


Boom and double oil cylinders, providing strong power.

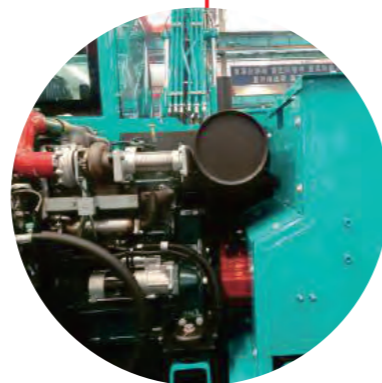
Integrated mold pressing head cover of medium excavator, showing an elegant appearance.



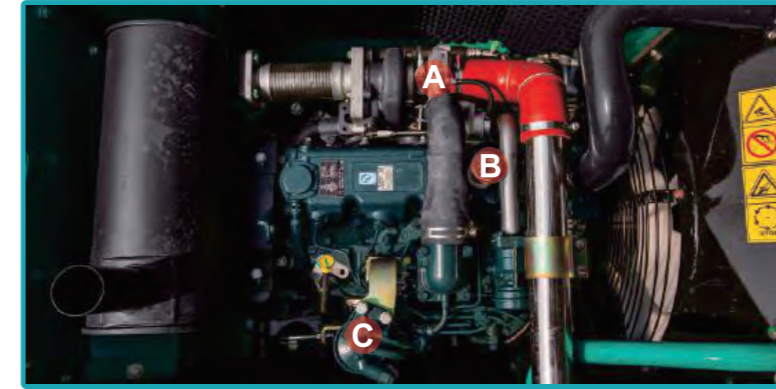
3,225mm long track, promising higher stability than other excavators at the same level.



With a multi-compartment layout mode of medium excavator, the pump chamber, engine compartment and valve chamber are completely isolated from each other, realizing lower noise and higher heat dissipation efficiency.



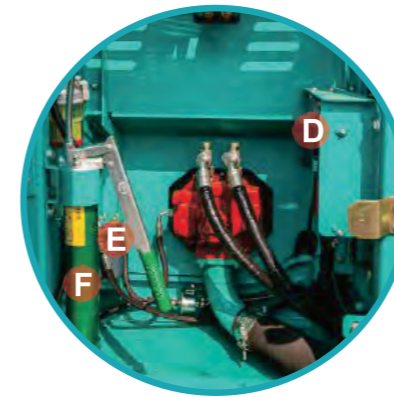
# Easy and Convenient Maintenance



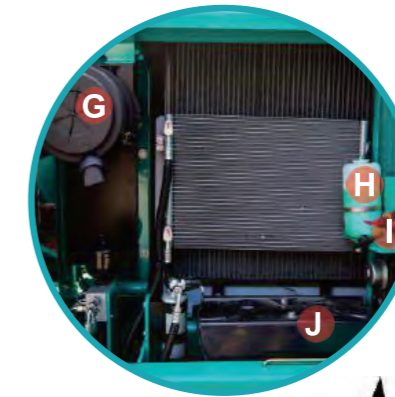
Generator (A), oil filler (B) and fuel filter (C) which can be maintained only by opening the head cover.



Centralized lubrication of boom and one-stop application of grease.



Remote oil filter (D)  
Pilot oil filter (E)  
Grease gun (F)



Air filter element (G)  
Auxiliary water tank (H)  
Battery switch (I)  
Battery (J)

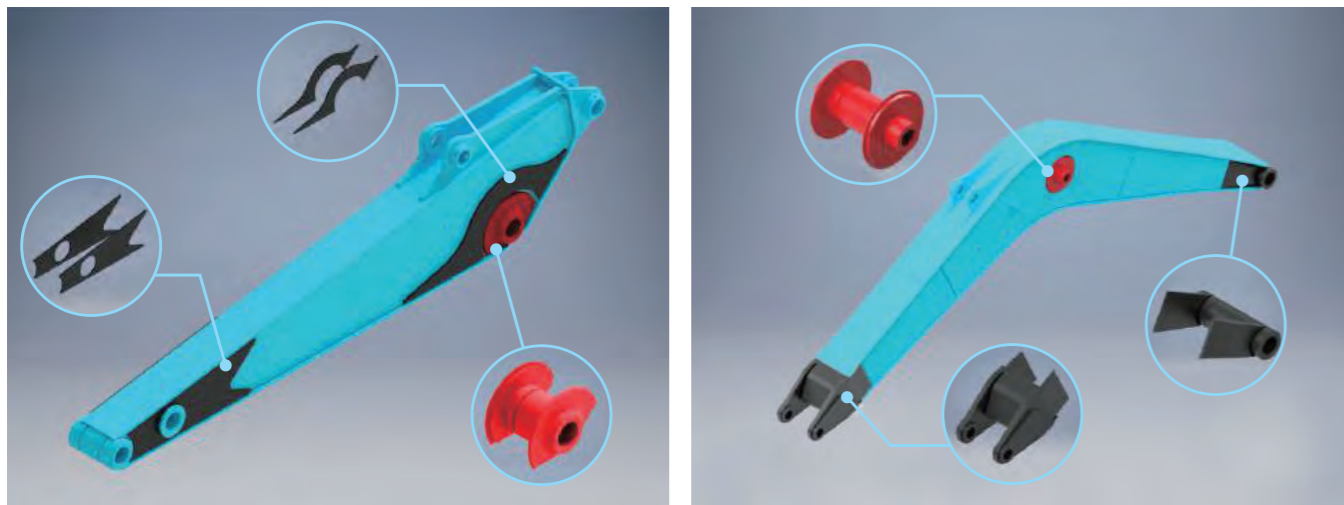
Double doors + head cover, facilitating easy and convenient maintenance.





## Durable and Reliable Reinforced Structure

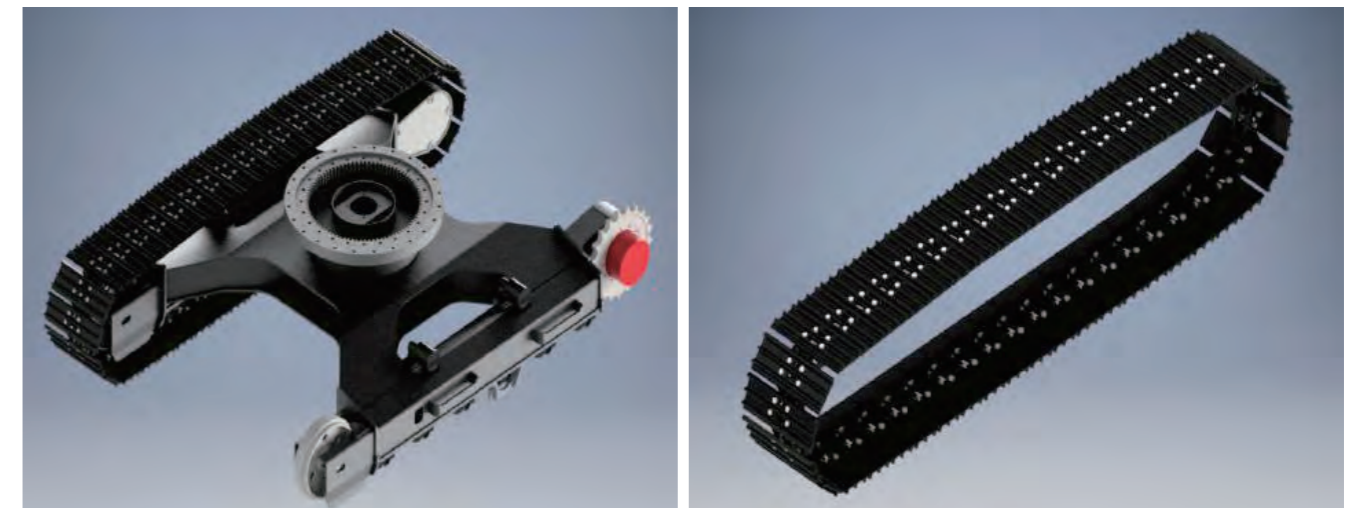
### Reinforced operating device



- ◆All arm supports are of a forging structure and are effectively reinforced at key parts.
- ◆The front and rear supports of boom are of high-strength material and the intermediate support is integrally formed with a forging process.
- ◆All shaft sleeves are made with a liquid nitrogen cold fitting process, realizing higher interference and no displacement of sleeve in shaft hole.

### Reinforced chassis

Superior to the chassis of excavators of the same tonnage. In the form of heavy-duty excavator featuring "four wheels with one track", the excavator can run stably and reliably. With a structure of four carrier rollers + anti-looseness frame of track, the excavator is free of looseness of track.



## Energy-saving and Efficient Brand New System



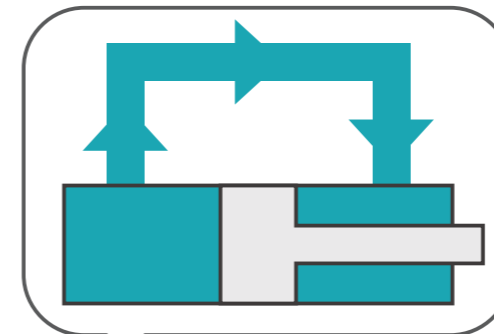
A new generation of large-diameter control valve integrating flow regeneration of boom and arm, featuring small pressure loss, accurate control, smooth operation and better energy-saving effect.



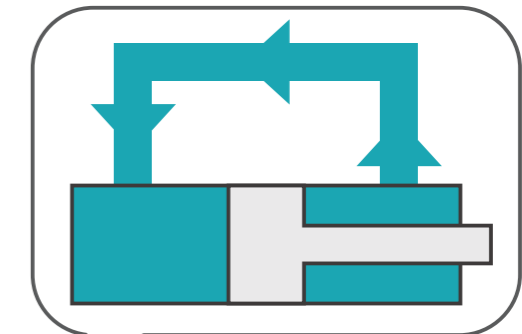
A brand new main pump with absorbing power perfectly matching the output power of engine, improving the overall operation efficiency.

In the regeneration loop for boom lowering, hydraulic oil in the large cavity of oil cylinder is partially transferred to the small cavity by effective use of potential energy of the boom, to reduce the energy output of main pump and the oil consumption during operation.

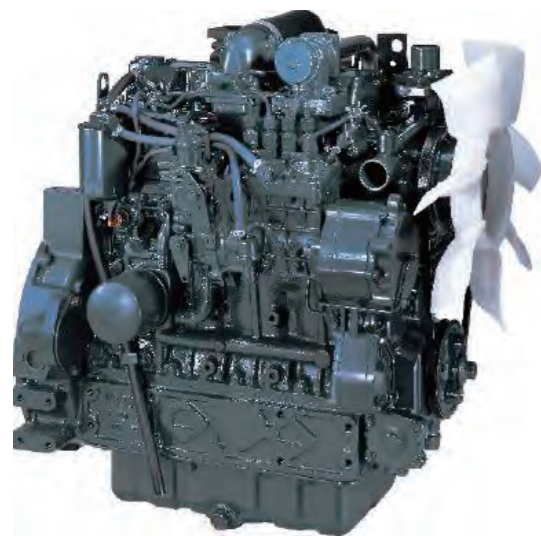
In the regeneration loop for arm retraction, hydraulic oil in the small cavity of oil cylinder is transferred to the large cavity by effective use of potential energy of the arm, to reduce the energy output of main pump and the oil consumption during operation.



Regeneration loop  
for boom lowering



Regeneration loop  
for arm retraction



Reliable performance with a high-power three-stage engine, and good adaptability of oil with a direct injection engine. Standard automatic idling, realizing efficient operation and saving of fuel cost.



## Easy, Comfortable and Safe Operation



- Reversible front windscreen and sunroof of the cab, creating a wide view for you.
- Conformity of the cab with European TOPS&FOPS safety standards.
- 5.7-inch color screen featuring simple interface, simple operation and direct display of machine conditions.
- A brand new handle, reducing the operating force by 20% and featuring flexible operation and good fretting behavior.
- A multifunction radio with USB interface and Bluetooth.
- Double LED headlights of the boom, facilitating easy operation at night.

Adjustable suspension seat which conforms to ergonomics and can meet the requirements of drivers of different heights and weights, realizing a higher level of comfort during operation.

# Basic Configuration

Engine/Oil Pump	Cab
9-inch air filter element	FOPS and TOPS certification
Electric oil suction pump	Two-stage adjustable suspension seat
Oil-water separator with water drain outlet	Safety belt
Understructure	Pedal type traveling control lever
450mm wide steel track	Air conditioner
Traveling dual-speed switch	Front windscreen defroster
One anti-looseness frame of track on each side	Climbing type wiper
Two track carrier rollers on each side	12V power supply slot
Hydraulic system	Cigar lighter
Pressure testing port	Multi-function radio
Linear traveling function	Lateral rearview mirror
Automatic idling system	Cup holder
Left foot pedal control accessories	5.7-inch color screen
Safety configuration	Operating device
Travel motor with disc brake	Breaker pipeline
Swing motor with disc brake	Two boom lights
Safety hammer	1950mm arm
Fire extinguisher	Standard bucket capacity 0.4m <sup>3</sup>

# Technical Parameters

SWE100E Technical parameters			
Bucket capacity		m <sup>3</sup>	0.4
Standard bucket width		mm	840
Operating weight		kg	9500
Dimension parameters	A	Wheel spacing	mm 2560
	B	Total track length	mm 3225
	C	Ground clearance of platform	mm 845
	D	Platform min. slewing radius	mm 1870
	E	Chassis width	mm 2320
	F	Track width	mm 450
	G	Chassis clearance from the ground	mm 370
	H	Track height	mm 700
	I	Total length	mm 6470
	J	Total height	mm 2660
K	Total width	mm 2320	
Working range	A	Max. digging height	mm 7515
	B	Max. discharging height	mm 5315
	C	Max. digging depth	mm 4372
	D	Max. vertical digging depth	mm 3930
	E	Max. digging radius	mm 6950
	F	Max. digging reach at ground level	mm 6800
Engine	Brand		Kubota
	Model		V3800-DI-T-ET09
	Total displacement	L	3.769
	Rated output power	kW/rpm	60.7/2200
Max. digging force (bucket rod)		kN	43
Max. digging force (bucket)		kN	64.5
Driving speed (high/low)		km/h	4.5/2.7
Gradeability		deg	35
Slewing speed		rpm	9
Ground specific pressure		kpa	36.8
Slewing motor type		Plunger motor	
Driving motor type		2-speed plunger motor	
Fuel tank capacity		L	145
Hydraulic tank capacity		L	120

